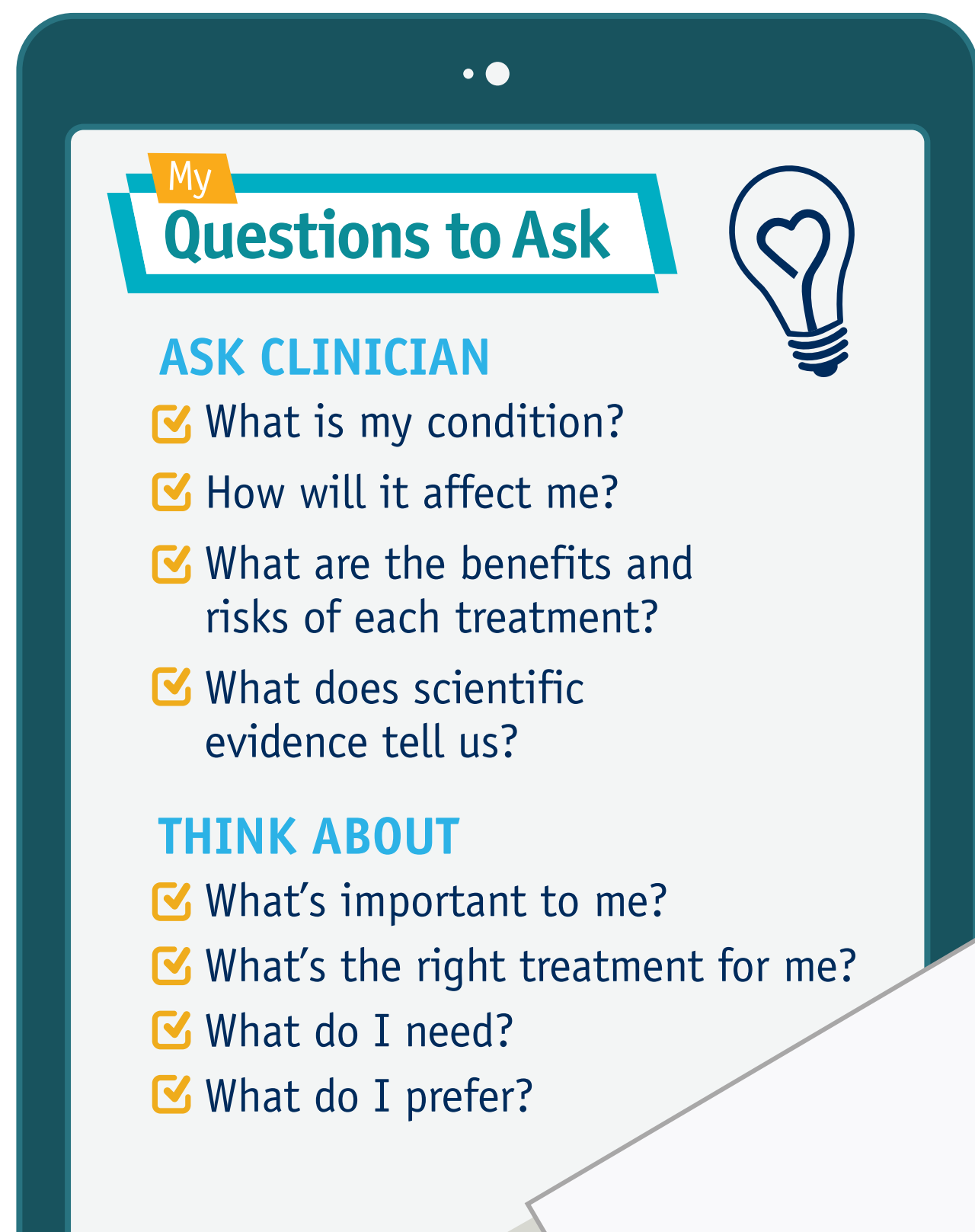


PARTNERS IN CARE

DECISION AIDS are tools to help you make **INFORMED DECISIONS** with your care team that are **RIGHT FOR YOU**



Use **SHARED DECISION-MAKING TOOLS** to talk with your clinician about **YOUR CARE OPTIONS & CONCERNS**. The tools help you to:



Define clearer goals for treatment



DECISION AIDS are **HELPFUL** when there is more than one treatment, there are big trade-offs or the **PATH FORWARD IS UNCLEAR**



Increase your knowledge & satisfaction with care



Align health decisions with your values

Information provided for educational purposes only. Please consult your health care provider about your specific health needs.

Find the Shared Decision-Making tool that's right for you at [CardioSmart.org/Decisions](https://www.cardiosmart.org/Decisions)